

Melrose 25

SUITABLE FOR:

9M + FRONTAGE

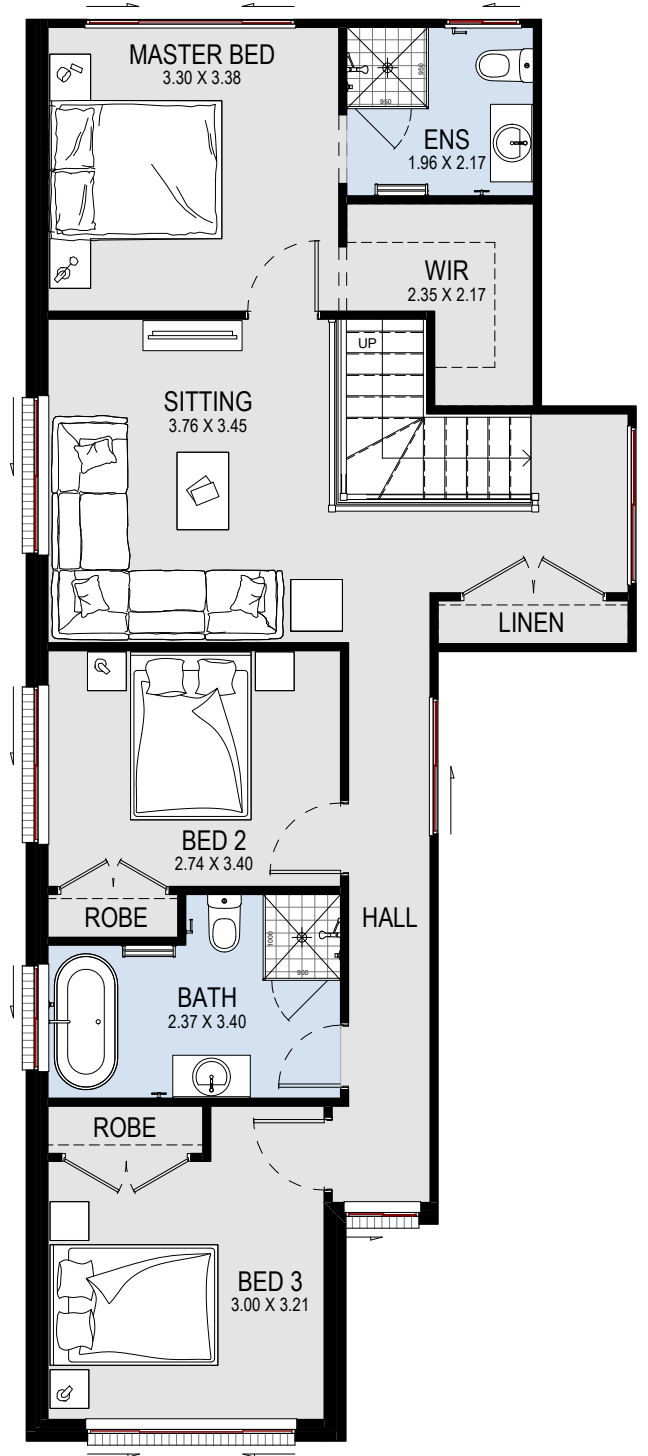
Suitable for zero lot boundary

Ground:	110.91m ²	Garage:	20.80m ²
First:	84.63m ²	Porch:	3.35m ²

9m

10m

12.5m



4 3 1

Alfresco:	10.82m ²	Total:	234.05m ²	Width:	8.03m
Stair void:	3.55m ²	Squares:	25sq	Depth:	19.67m